

BA Bushing adapters



- Allows measurements of partial discharge (PD), transfer impedance, and loss factor
- Suitable for permanent indoor and outdoor use
- Robust housing made of anodised aluminium
- Dust tight and protected against water according to Ingress Protection class 66
- Tailor-made to fulfil customer-specific needs

DESCRIPTION

Partial discharge activity is a prominent indicator for ongoing degradation of electrical insulation systems, so continuous on-line partial discharge monitoring, or scheduled on-line measurements using portable instruments, help to detect incipient failure within the insulation of power and distribution transformers.

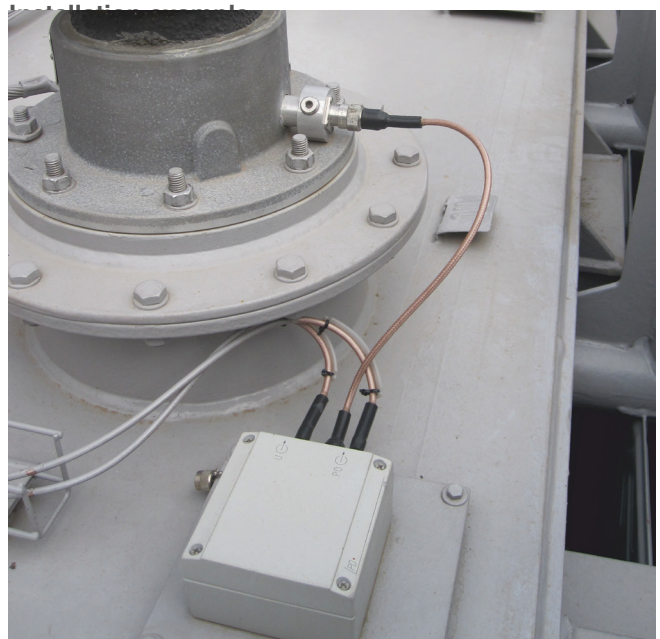
Analysing the discharge activity requires the installation of coupling devices, which preferably take the signals from the capacitive tap of the transformer bushings. Bushing adapters (BA), in combination with a matching bushing coupling unit, make different signals available for measurement and monitoring.

The voltage range and the bushing capacitances of the transformer determine the type of coupling units to be used. Power Diagnostix offers a wide range of bushing adapters for bushings of many different manufacturers, such as Micafil, ABB, HSP, PCORE, Moser-Glaser, and Trench.

Besides the standard adapters, other adapter models are available on request and will be custom made. For this, we need the dimensions of the bushing's test tap. We have created a document to help our customers determine the most important dimensions. Please [download it here](#) or contact us at support@pdix.com for support. Power Diagnostix will be happy to assist in determining a suitable adapter for a specific transformer bushing.

KEY FEATURES AND OPTIONS

- IP66 protected housing
- For indoor and outdoor installation
- Special stainless-steel enclosure for offshore applications
- Two built-in surge arresters for overvoltage protection



TECHNICAL DATA

Operation temp.: -40 °C to +80 °C
 Storage temp.: -40 °C to +90 °C
 Overvoltage protection: Two surge arresters with 600 V DC spark-over voltage

Housing

Material: Anodised aluminium or stainless steel
 Colour: RAL9006 (stainless steel models are without colouring)
 Protection class: IP66

Connectors

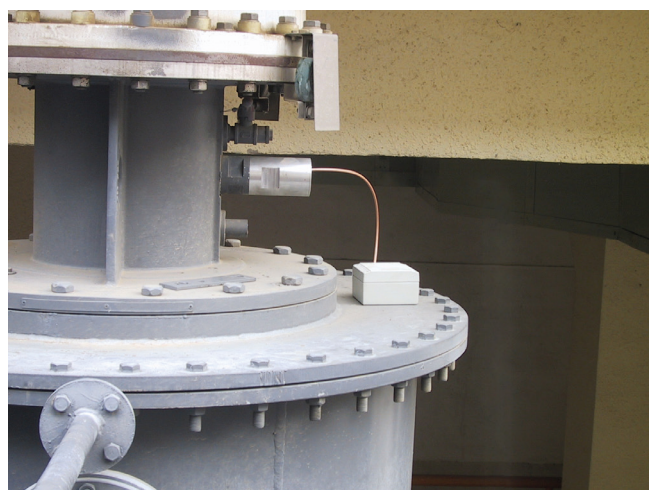
Input connector: See table below
 Output connector: Type N

TYPE	THREAD	SIZE	CONN.	SIZE	DIMENSIONS	WEIGHT
BA2	Inside	G3/4 in	Female	4 mm	Ø50 x 64 mm	170 g
BA3	Outside	M45 x 2	Female	8 mm	Ø65 x 118 mm	1 kg
BA4 adapt.	Flange Inside	-- M76 x 1.5	Male	8 mm	□70 x 103 mm	400 g
BA5	Inside	M24	Male	4 mm	□41 x 79 mm	200 g
BA6	Outside	M38 x 1.5	Male	4 mm	Ø44 x 80 mm	190 g
BA7C	Outside	2¼ in-12 UNF	Female	8 mm	Ø80 x 104 mm	190 g
BA7D	Outside	2¼ in-12 UNF	Female	3.5 mm	Ø80 x 104 mm	190 g
BA8	Inside	5/8 in-11 UNC	-	3 mm	□30 x 70 mm	100 g
BA9	Outside	M30 x 1.5	Female	4 mm	Ø50 x 60 mm	180 g
BA9B	Inside	M30 x 1.5	Female	8 mm	Ø50 x 66 mm	180 g
BA10	Outside	M16 x 1.5	Female	4 mm	Ø55 x 64 mm	120 g
BA10B	Outside	M16 x 1.5	Female	4 mm	Ø34 x 64 mm	90 g
BA10C	Outside	M16 x 1.5	Female	4 mm	Ø25 x 61 mm	60 g
BA11	Flange		Female	8 mm	□85 x 100 mm	500 g
BA12	Outside	M30 x 2	Female	6 mm	Ø45 x 87 mm	200 g
BA14	Outside	1 1/16 in-12 UN	Female	8 mm	Ø45 x 100 mm	210 g
BA15	Outside	M30 x 2	Female	9 mm	Ø45 x 102 mm	200 g
BA17	Outside	M30 x 2	Female	4 mm	Ø40 x 82 mm	190 g
BA18	Flange	--	Female	8 mm	41 x 72 x 127 mm	180 g
BA19	Flange	--	Female	8 mm	□82 x 105 mm	1 kg
BA21	Outside	M24 x 1.5	Female	4 mm	Ø50 x 71 mm	180 g
BA21B	Outside	M24 x 1.5	Female	4 mm	Ø50 x 71 mm	180 g
BA23	Inside	M36 x 3	Female	5 mm	Ø40 x 59 mm	180 g
BA25	Outside	1 ¼ in-12 UNF	Spring	5 mm	Ø45 x 60 mm	140 g
BA26	Outside	1 1/8 in-12 UNF	Female	1/4 in	Ø50 x 60 mm	150 g
BA27	Outside	1 1/8 in-12 UNF	Female	8 mm	Ø45 x 70 mm	150 g
BA28	Outside	¾ in-14 NPSM	Spring	9 mm	Ø34 x 56 mm	80 g
BA29	Inside	M33 x 1.5	Female	4 mm	Ø43 x 62 mm	330 g
BA30	Inside	M30 x 1.5	Female	6 mm	Ø44 x 61 mm	150 g
BA31	Inside	4 x 6 holes, dist.: 44 mm	Female	10 mm	□58 x 53 mm	100 g
BA32	Inside	M42 x 1.5	Female	6 mm	Ø49 x 76 mm	400 g
BA33	Outside	M20 x 1.5	Male	5.3 mm	Ø44 x 59 mm	150 g
BA34	Inside	M24 x 1.5	Female (adapter)	M6	Ø43 x 91 mm	350 g
BA35	Inside	M24 x 1	Female (adapter)	M6	Ø43 x 93 mm	300g



ORDERING INFORMATION

Product	Order no.	Product	Order no.
Bushing adapter BA2, anodised aluminium	PX12024	Bushing adapter BA17, anodised aluminium	PX12032
Bushing adapter BA2, stainless steel	PX12029	Bushing adapter BA17, stainless steel	PX12033
Bushing adapter BA3, anodised aluminium	PX12011	Bushing adapter BA18, anodised aluminium	PX12013
Bushing adapter BA4, anodised aluminium	PX12018	Bushing adapter BA19, anodised aluminium	PX12014
Bushing adapter BA5, anodised aluminium	PX12002	Bushing adapter BA21, anodised aluminium	PX12027
Bushing adapter BA6, anodised aluminium	PX12003	Bushing adapter BA21, stainless steel	PX12031
Bushing adapter BA7B, anodised aluminium	PX12016	Bushing adapter BA21B, anodised aluminium	PX12028
Bushing adapter BA7C, anodised aluminium	PX12034	Bushing adapter BA23, anodised aluminium	PX12043
Bushing adapter BA7C, stainless steel	PX12036	Bushing adapter BA23, stainless steel	PX12044
Bushing adapter BA7D, anodised aluminium	PX12090	Bushing adapter BA25, anodised aluminium	PX12037
Bushing adapter BA8, anodised aluminium	PX12005	Bushing adapter BA25, stainless steel	PX12038
Bushing adapter BA9, anodised aluminium	PX12025	Bushing adapter BA27, anodised aluminium	PX12045
Bushing adapter BA9, stainless steel	PX12030	Bushing adapter BA27, stainless steel	PX12046
Bushing adapter BA9B, anodised aluminium	PX12039	Bushing adapter BA28, anodised aluminium	PX12109
Bushing adapter BA9B, stainless steel	PX12040	Bushing adapter BA29, anodised aluminium	PX12116
Bushing adapter BA10, anodised aluminium	PX12012	Bushing adapter BA29, stainless steel	PX12115
Bushing adapter BA10C, anodised aluminium	PX12041	Bushing adapter BA30, stainless steel	PX12123
Bushing adapter BA10C, stainless steel	PX12042	Bushing adapter BA31, anodised aluminium	PX12124
Bushing adapter BA10F, anodised aluminium	PX12048	Bushing adapter BA32, anodised aluminium	PX13317
Bushing adapter BA11, anodised aluminium	PX12008	Bushing adapter BA33, anodised aluminium	PX12130
Bushing adapter BA12, anodised aluminium	PX12009	Bushing adapter BA34, anodised aluminium	PX12131
Bushing adapter BA14, anodised aluminium	PX12019	Bushing adapter BA35, anodised aluminium	PX12132
Bushing adapter BA15, anodised aluminium	PX12020		



SALES OFFICE

Power Diagnostix Systems GmbH
 Vaalser Strasse 250
 52074 Aachen, Germany
 T: +49 241 74927
 E: support@pdix.com

BA_DS_E1.02

www.pdix.com

Technical changes reserved
 ISO 9001, ISO 14001
 ISO 17025, ISO 45001