

MWS Monitoring Web Server



- Web browser based remote access to a monitoring instrument (e. g. *ICMmonitor*)
- Instant visualization of event log and corresponding PD data
- Responsive user interface
- User group specific displays
- Secure remote access via Internet if combined with an optional LTE mobile router
- Optional heating element for harsh environmental conditions

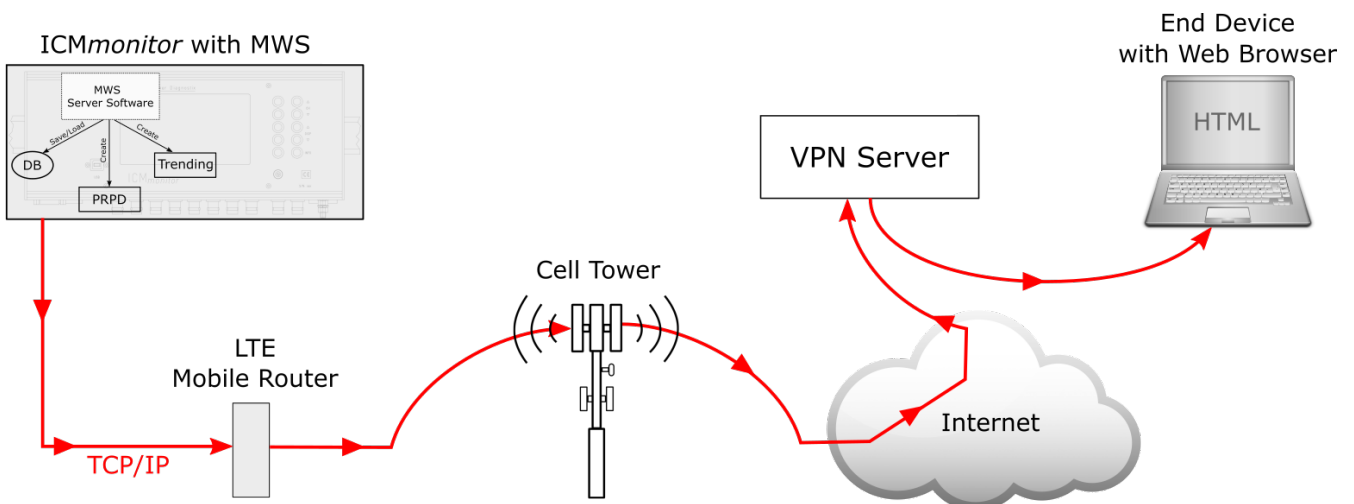
DESCRIPTION

Power Diagnostix' MWS is a monitoring web server providing an Ethernet gateway for remote access to monitoring data recorded with e. g. an *ICMmonitor*. Alarms triggered by the instrument can be reported by automated email to the responsible person. To access the PD instrument by remote a modern web browser is required (Firefox version 68.0, Chrome version 75.0, Opera version 62.0, Edge version 44.17763, or later). The module is available as DIN rail mountable enclosure or built-in plug-in board.

Combined with an LTE mobile router, a secure remote access via Internet can be provided.

YOUR BENEFITS

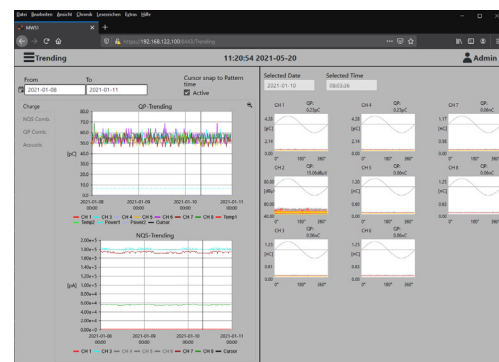
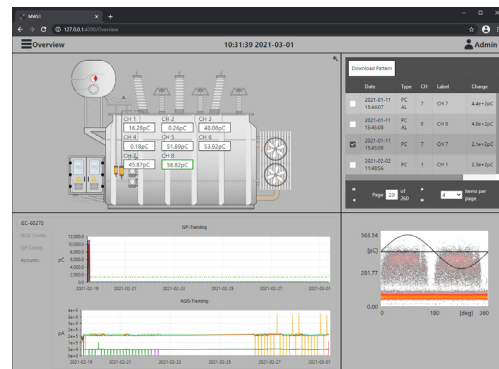
- Key information at a glance via remote access
- Alarm notification via e-mail
- Easy integration into customer's network
- Can be attached to already existing *ICMmonitor* instruments



WEB INTERFACE

The user friendly web interface offers easy remote access to all collected data, recorded patterns, and the instrument's setup.

- Web browser based visualization
- Full control of the instrument
- Modern responsive design
- User group specific displays
- E-mail notification function
- Database export
- Built-in report generator
- Convenient update possibilities



TECHNICAL DATA (HAT RAIL MODEL)

Mains supply: 18–26 V_{DC}, 10 W
18–26 V_{DC}, 30 W (with optional heating element)

Connectors: 1x LAN (RJ-45, 100 Mbit/s)
2x USB (1x Type-A, 1x Mini, 480 Mbit/s)
2x Phoenix (2-pole for mains supply & ground, 3-pole for power interrupt)

Fuse for power interrupt: 3.15 A (time-lag)

Operating temperature: -20–70 °C
(non-condensing) -40–70 °C (with optional heating element)

Dimensions (HxWxD): 130 x 35 x 110 mm³

Weight: Approx. 500 g

ORDERING INFORMATION

Description	Order no.	Including (if not built-in)
MWS (built-in)	PX90048	USB cord, Type-A, customer specific length
MWS (built-in with heating element)	PX90060	LAN cable, RJ-45, customer specific length, CAT 6
MWS (DIN rail mountable)	PX90054	

SALES OFFICE

Power Diagnostix Systems GmbH
Vaalser Strasse 250
52074 Aachen, Germany
T +49 241 74927
E support@pdix.com

MWS_DS_E2.00_DR

Technical changes reserved

ISO 9001, ISO 14001, ISO 17025
www.pdix.com